

STAIR I PLAN AT 3RD TO 4TH FLOORS

STAIR I PLAN AT 4TH THRU 8TH FLOORS

STAIR I PLAN AT 9TH TO 10TH FLOORS

SEE NOTE 'A' THIS DRAWING
SEE NOTE 'B' THIS DRAWING

SEE NOTE 'A' THIS DRAWING
SEE NOTE 'B' THIS DRAWING

NOTE:
PLAN FROM 8TH TO 9TH FLOORS NOT SHOWN.
SEE PHOTOS A1 AND A2 ON DWG S5

SEE NOTE 'A' THIS DRAWING
SEE NOTE 'B' THIS DRAWING

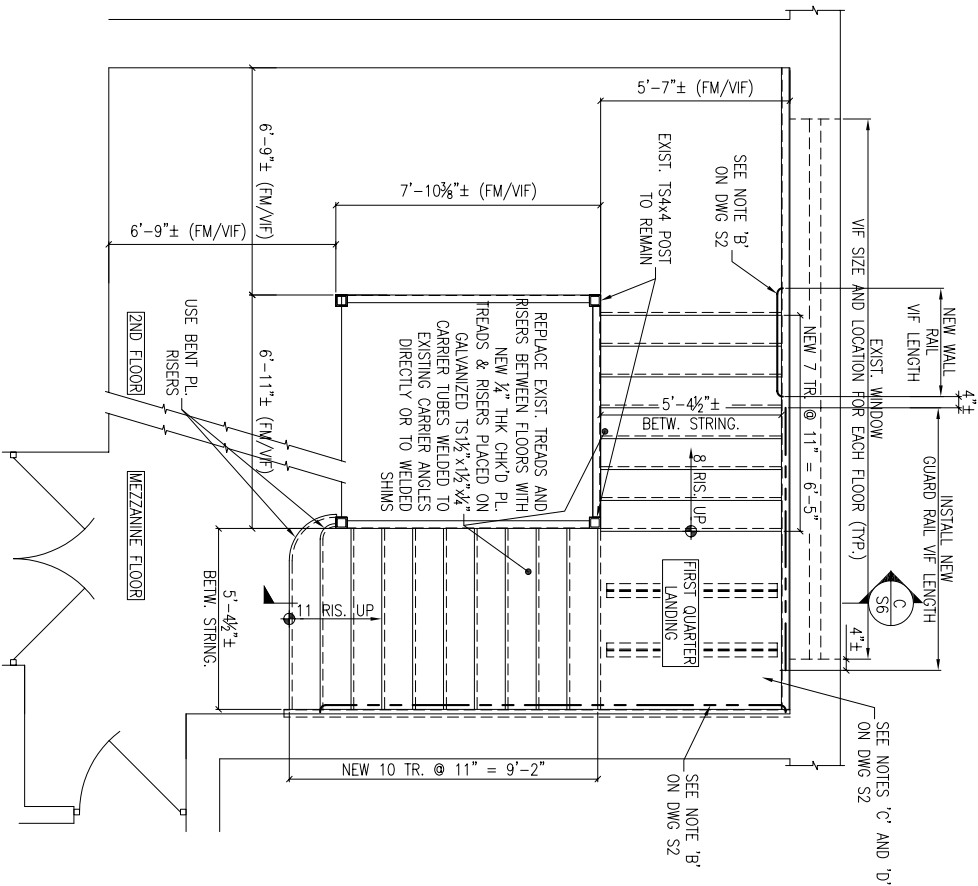
NOTE 'A':
EXIST. RISER HEIGHTS ARE NOT EQUAL. IT WILL BE THE CONTRACTOR'S RESPONSIBILITY TO WELD STEEL SHIMS OF APPROPRIATE THICKNESS TO THE EXIST. CARRIER ANGLES TO MAKE SURE THAT THE RISER HEIGHTS IN A GIVEN FLIGHT WILL BE EQUAL

NOTE 'B':
REPLACE ALL EXISTING WOOD WALL RAIL WITH 1/2" DIAMETER STANDARD STEEL PIPE CONFORMING TO ASTM A53 GRADE B. THE LENGTH OF EACH INDIVIDUAL WALL RAIL SHALL BE AT LEAST EQUAL TO THE CORRESPONDING EXISTING WALL RAIL. THE RAIL SHALL BE SUPPORTED WITH STANDARD STEEL BRACKETS SPACED AT A MAXIMUM OF 6'-0" ON CENTERS. THE BRACKETS SHALL BE FASTENED TO MASONRY WITH GALVANIZED HILTI SLEEVE ANCHORS MINIMUM 3" IN DEPTH. FOR PAINTING SEE PAINTING NOTES.

NOTE 'C':
REMOVE EXISTING SLAB AND PAN AT 1ST AND 2ND QUARTER LANDINGS FOR ALL STAIR SEGMENTS WITH THE EXCEPTION OF STAIR SEGMENT BETWEEN 8TH AND 9TH FLOORS. DO NOT DAMAGE OR REMOVE EXISTING CARRIER ANGLES AROUND THE PERIPHERY (TYP. FOR ALL PLANS SHOWN)

NOTE 'D':
WELD NEW 21S 3/4x2 5/8 (LLV) TO EXIST. CARRIER ANGLES. SEE DET. 1 ON DWG S5. THESE ANGLE SUPPORTS MAY SPAN IN THE DIRECTION AT RIGHT ANGLES TO THAT SHOWN ON THE PLANS AT THE CONTRACTOR'S O

REV.	DATE	DESCRIPTION
PROJECT: MACY'S HERALD SQUARE STORE, NYC		
STAIR I UPGRADE		
TITLE: STAIR I PLANS		
3RD - 8TH AND 9TH - 10TH		
DRAWN BY: A.B.	DATE	PROJ. NO.
CHECKED BY:	7/21/08	DRAWING
		S2

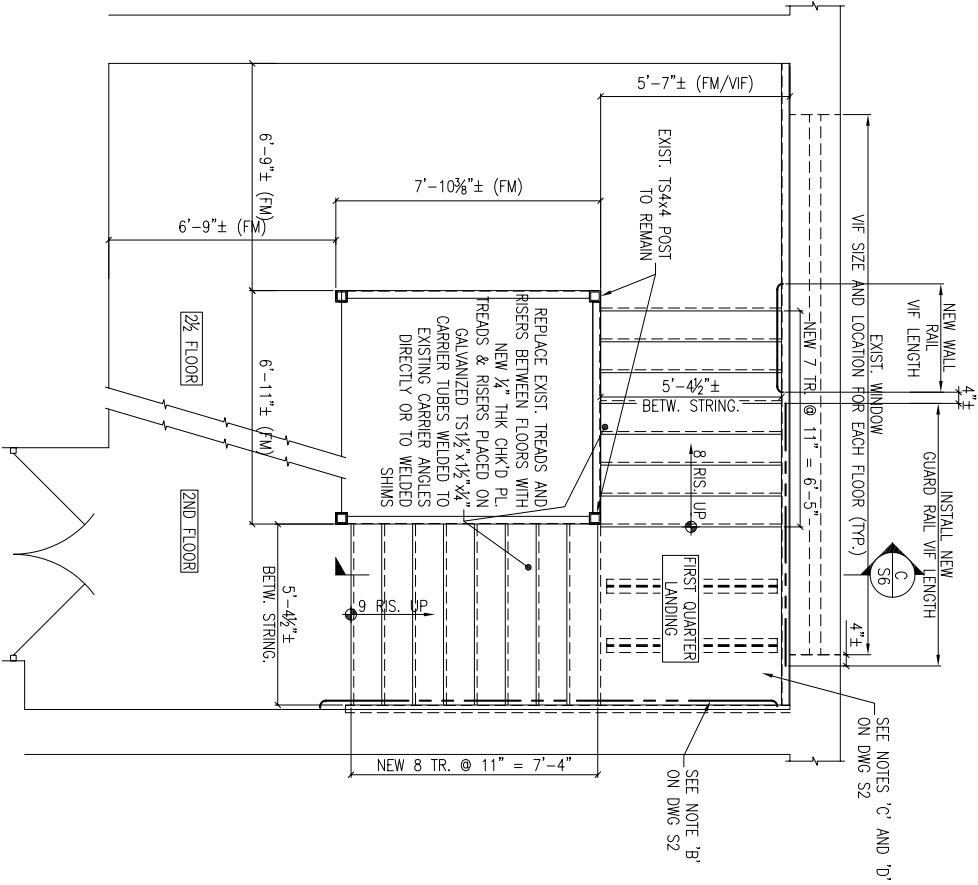


STAIR I PLAN AT MEZZANINE TO 2ND FLOORS

SCALE: 3/8" = 1'-0"

SEE NOTE 'A' ON DWG S2

SEE NOTE 'B' ON DWG S2

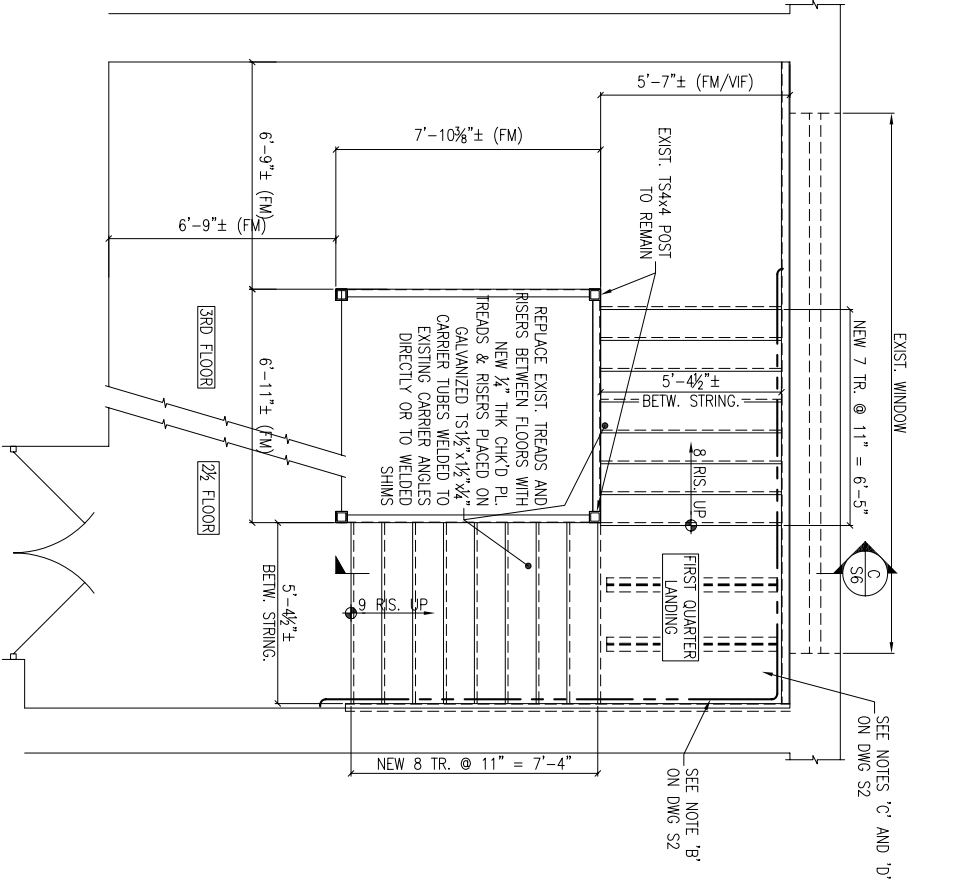


STAIR I PLAN AT 2ND TO 2 1/2 FLOORS

SCALE: 3/8" = 1'-0"

SEE NOTE 'A' ON DWG S2

SEE NOTE 'B' ON DWG S2

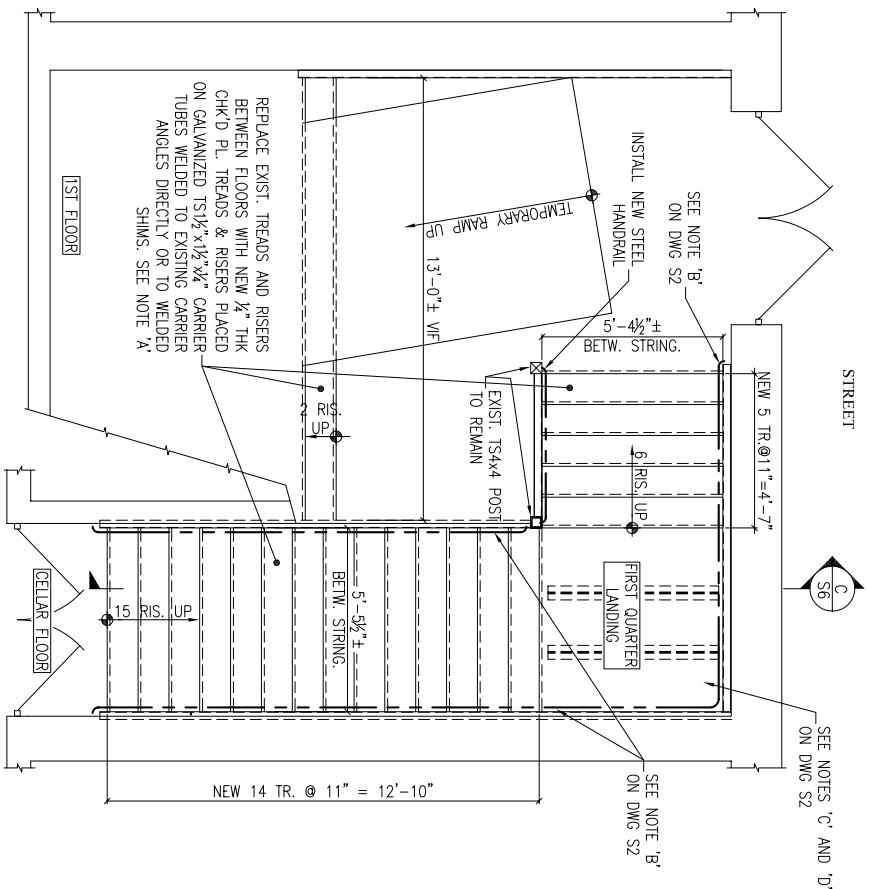


STAIR I PLAN AT 2 1/2 TO 3RD FLOORS

SCALE: 3/8" = 1'-0"

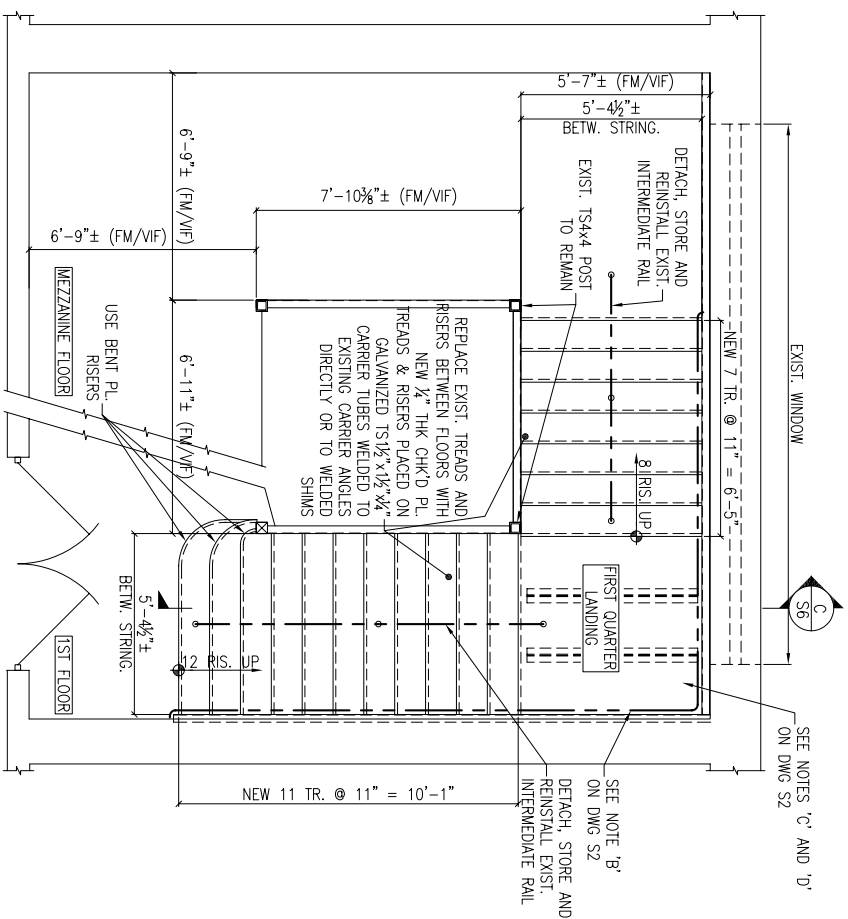
SEE NOTE 'A' ON DWG S2

SEE NOTE 'B' ON DWG S2



STAIR I PLAN AT CELLAR TO 1ST FLOORS

SCALE: 3/8" = 1'-0"
SEE NOTE 'A' ON DWG S2
SEE NOTE 'B' ON DWG S2

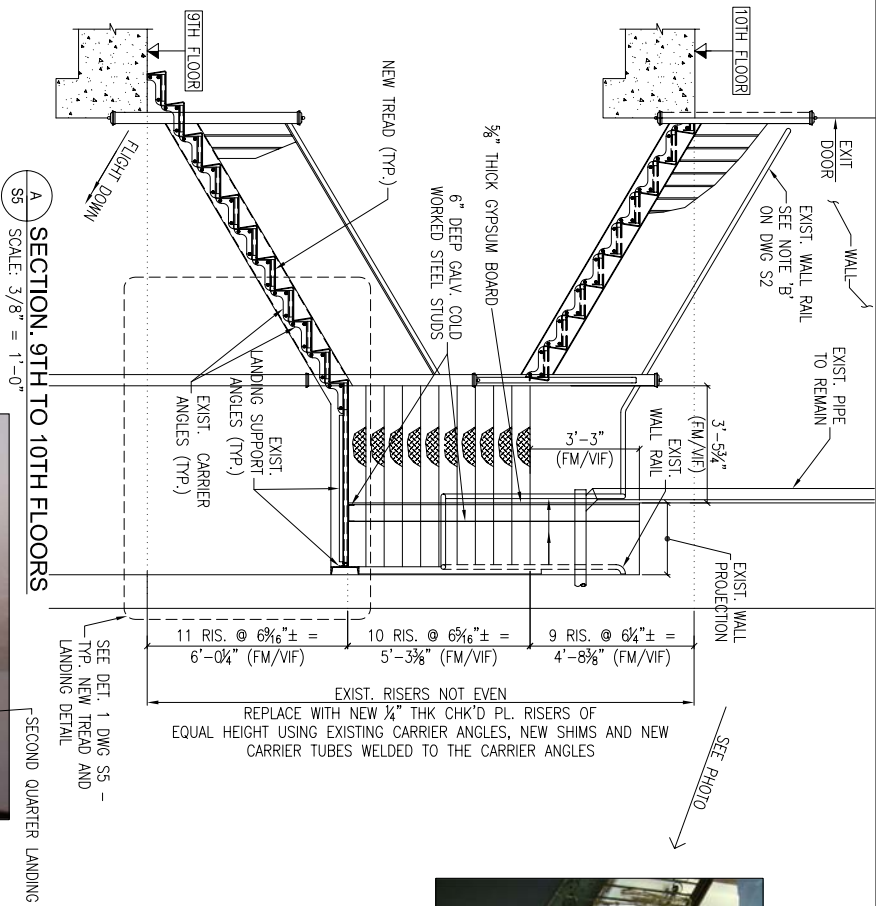


STAIR I PLAN AT 1ST TO MEZZANINE FLOORS

SCALE: 3/8" = 1'-0"
SEE NOTE 'A' ON DWG S2
SEE NOTE 'B' ON DWG S2

REV.	DATE
	DESCRIPTION

PROJECT: MACY'S HERALD SQUARE STORE, NYC			
STAIR I UPGRADE			
TITLE: STAIR I PLANS			
DRAWN BY: A.B.	DATE	PROJ. NO.	DRAWING
CHECKED BY:	7/21/08		S4



A1 PHOTO. 8TH TO 9TH FLOORS
FLIGHT UP FROM SECOND QUARTER LANDING
SS SCALE: 3/8" = 1'-0"

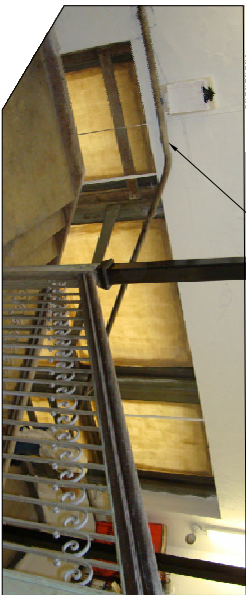
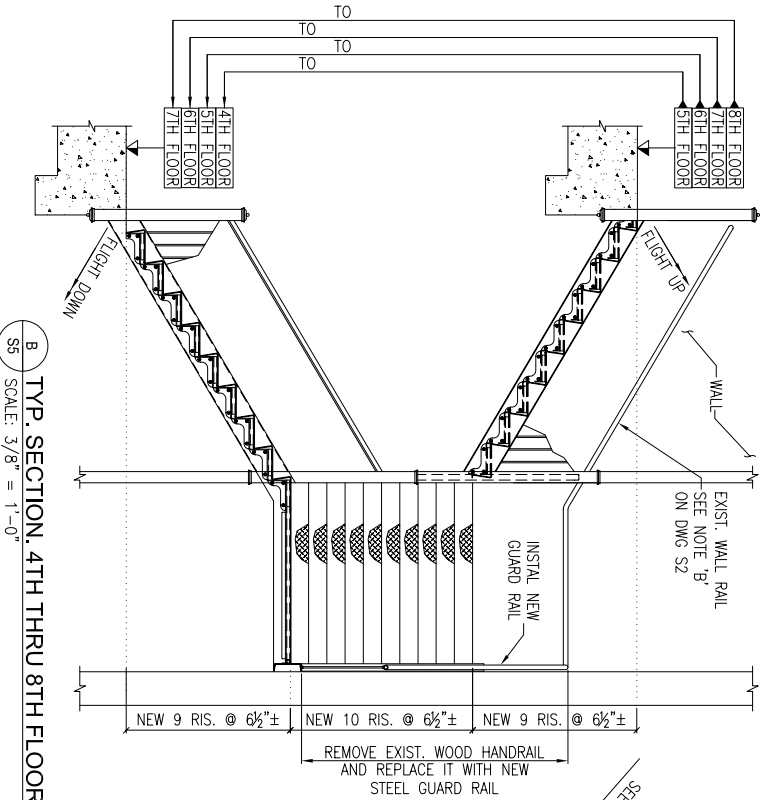
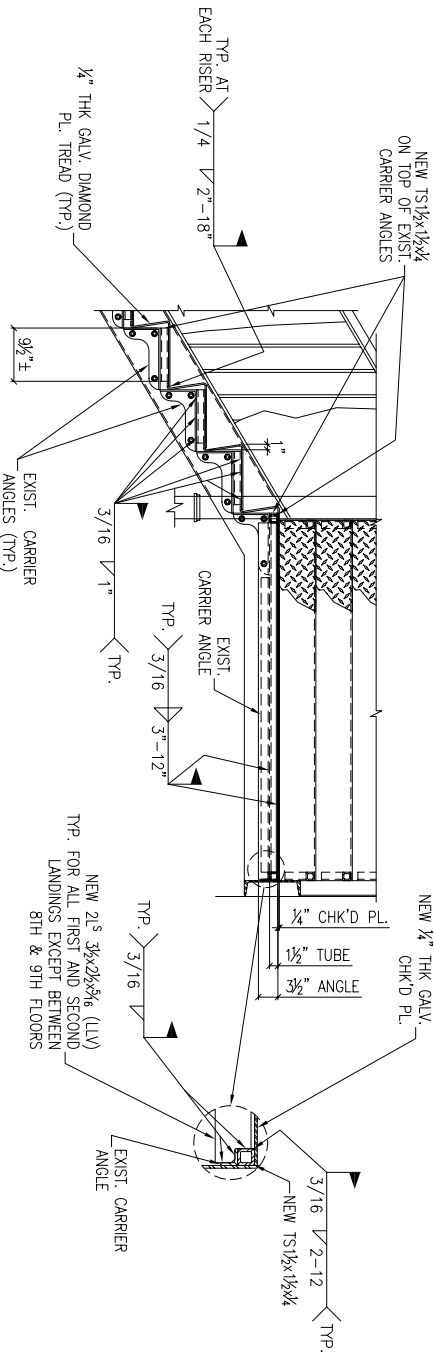
A2 PHOTO. 8TH TO 9TH FLOORS
FLIGHT UP FROM 8TH FL. TO FIRST QUARTER LANDING
SS SCALE: 3/8" = 1'-0"



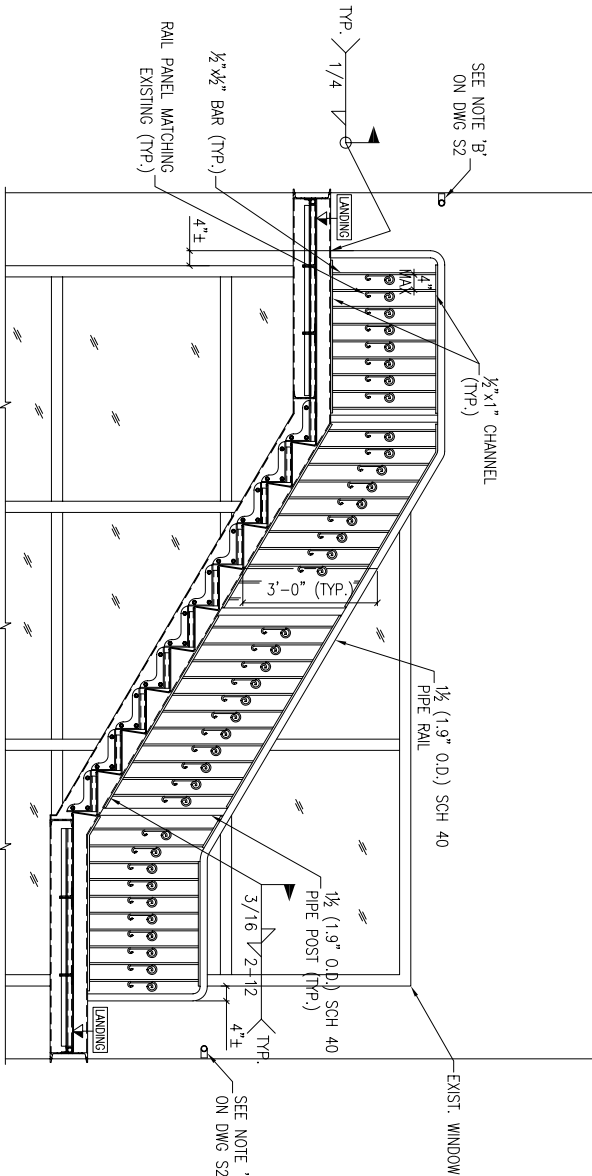
FIRST QUARTER LANDING
INSTALL 1/2" (1.9" O.D.) SCH 40 NEW HANDRAIL WITH BRACKETS

8TH FLOOR

1 TYP. NEW TREAD AND LANDING DETAIL
SS SCALE: 3/4" = 1'-0"

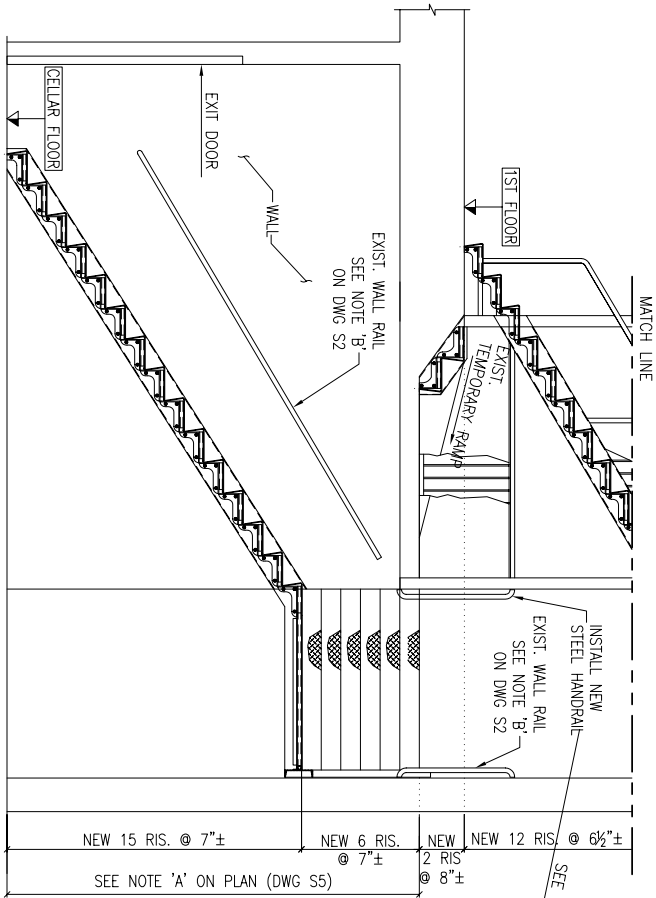
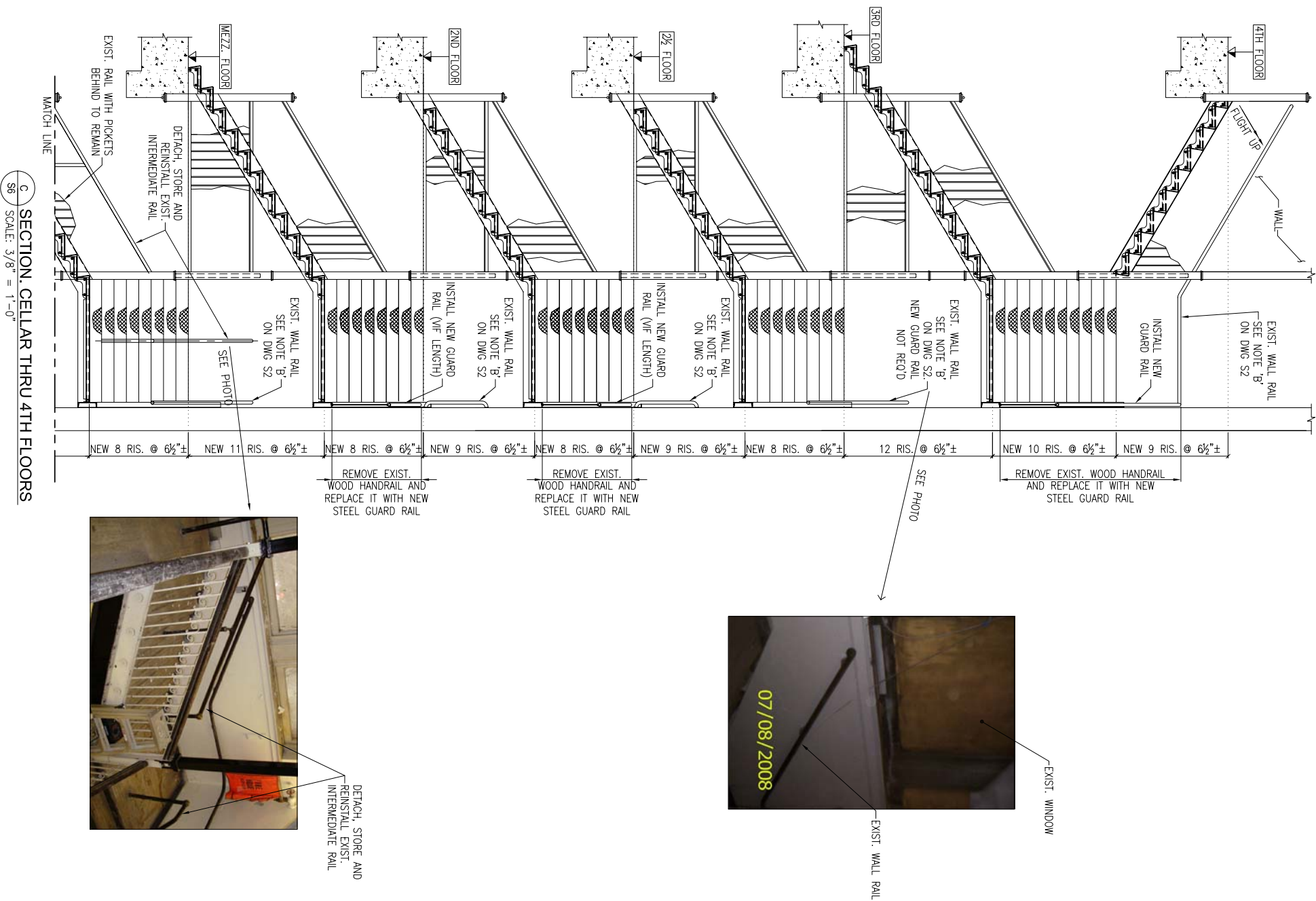


2 TYP. NEW GUARD RAIL DETAIL
SS SCALE: 1/2" = 1'-0"



NOTE:
SEE DET. 1 ON DWG S5 FOR THE BALANCE OF INFORMATION

PROJECT: MACY'S HERALD SQUARE STORE, NYC			
STAIR UPGRADE			
TITLE: STAIR SECTIONS			
DRAWN BY: A.B.	DATE	PROJ. NO.	DRAWING
CHECKED BY:	7/21/08		S5



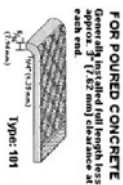
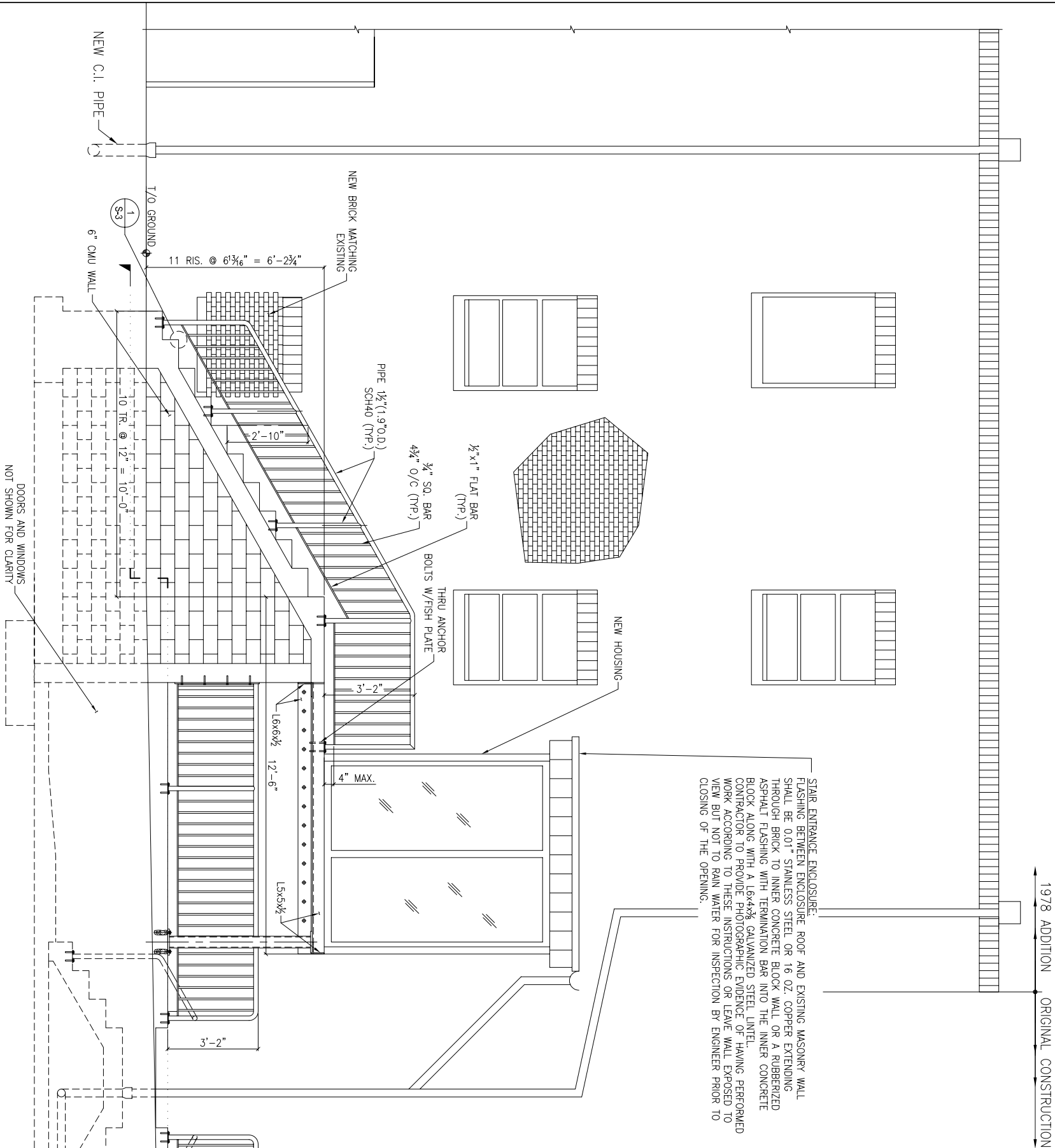
C SECTION, CELLAR THRU 4TH FLOORS (CONTINUED)

REV.	DATE	DESCRIPTION
PROJECT: MACY'S HERALD SQUARE STORE, NYC		
STAIR UPGRADE		
TITLE: STAIR SECTIONS		
DRAWN BY: A.B.	DATE	PROJ. NO.
CHECKED BY:	7/21/08	DRAWING
		S6

SCOPE OF NEW CONSTRUCTION WORK

SCOPE OF CONSTRUCTION WORK COVERS BUT IS NOT LIMITED TO THE FOLLOWING AND NOT NECESSARILY IN THE ORDER IT IS LISTED:

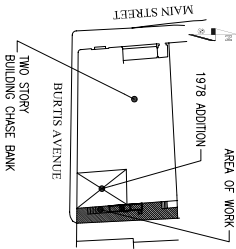
1. EXCAVATE TRENCHES FOR NEW UNDERGROUND DRAINAGE LINES.
2. EXCAVATE FOR DRYWELL INSTALLATION.
3. INSTALL NEW CAST IRON DRAINAGE PIPES AND THE DRYWELL.
4. TEST DRAINAGE INSTALLATION FOR LEAK-TIGHTNESS AND REPAIR LEAKS IF ANY.
5. INSTALL DRYWELL COVER.
6. REMOVE EXISTING BASEMENT WINDOW IN THE EXTERIOR WALL ABOVE THE BASE OF EXISTING STAIR TO FIRST FLOOR BLOCK THE OPENING WITH CMU'S AND MATCHING BRICK MASONRY AND MORTAR JOINTS. APPLY PLASTER TO INSIDE SURFACE OF BLOCKED WINDOW FLUSH WITH SURROUNDING PLASTER. APPLY PRIMARY AND MATCHING FINISH COAT ON NEW PLASTER. CLEAN ALL DUST AND DRIPPINGS IN THE AREA OF REPAIR.
7. BACKFILL TRENCHES AND ANNULUS AROUND DRYWELL AND COMPACT THE BACKFILL.
8. EXCAVATE FOR STAIR AND PIT FOUNDATIONS AND CART AWAY EXCAVATED MATERIAL FOR OFF-SITE DISPOSAL.
9. FORM THE FOUNDATION REINFORCEMENT AND WALL REBAR DOWELS.
10. POUR FOUNDATIONS AND PIT BOTTOM SLAB WITH NEW FLOOR DRAINS USING SPECIFIED MIX OF CONCRETE.
11. INSTALL PIT WALL AND LANDING WALL REBARS AND POUR THE WALLS.
12. INSTALL FORMWORK AND OR LEAN CONCRETE OR GRAVEL, REINFORCEMENT AND POUR STEPS TO BASEMENT DOORS.
13. INSTALL POST SUPPORTING FIRST FLOOR LANDING, STEEL ANGLES, STEEL DECK, STAIR FORMWORK AND STAIR REBARS AND POUR CONCRETE ON THE STAIR AND THE LANDING.
14. INSTALL FIRST FLOOR REAR ENTRANCE LANDING ENCLOSURE, STAIR AND PIT HANDRAILING.
15. CONSTRUCT CMU IN-FILL WALL UNDER THE FIRST FLOOR STAIR TO CLOSE THE PLENUM BELOW THE STAIR.
16. REPAIR/RESTORE DRIVEWAY WEARING COURSE DAMAGED DUE TO CONSTRUCTION ACTIVITY AND CUT FOR INSTALLATION OF UNDERGROUND DRAINAGE PIPES AND DRYWELL WITH 3" LAYER OF ASPHALT CONCRETE.
17. LEAVE THE SITE CLEAN AND FREE OF TIRE MARKS, CONSTRUCTION DEBRIS OR LEFT-OVER CONSTRUCTION MATERIAL.
18. RE-INSTALL STEEL GATE REMOVED FOR CONSTRUCTION ACCESS.



1 TYPICAL SAFETY NOSING DETAIL
S-3 SCALE: N.T.S.

ABRASIVE CASTINGS SPECIFICATION:
PROVIDE ALUMOGRIIT, FERROGRIIT TYPE ____ 101 ____, SIZE _____.
SAFETY TREADS/NOSINGS AS MANUFACTURED BY WOOSTER PRODUCTS INC. FOR INTERIOR AND EXTERIOR STAIRS.
· ABRASIVE SHALL BE #20 VIRGIN GRAIN ALUMINUM OXIDE (AL2O3)
· ABRASIVE, INTEGRALLY CAST INTO THE WALKING SURFACE TO A MINIMUM DEPTH OF 1/32 INCH (.79 MM).
· SAFETY NOSINGS UP TO 6" (152.4 MM) DEEP WITH CROSS-HATCHED SURFACE BEING INSTALLED INTO WET CONCRETE SHALL HAVE A FEATURE STRIP ALONG THE BACK EDGE.
· CONCEALED TYPE ANCHORS SHALL BE SLOTTED RIVET TYPE, INTEGRALLY CAST INTO THE BODY OF THE NOSING A MINIMUM OF 3/8" (9.53 MM). (NOT MUSHROOM TYPE)
· CAST METALS USED SHALL CONFORM TO THE FOLLOWING SPECIFICATION:
ALUMOGRIIT (ABRASIVE CAST ALUMINUM):
NO. 43 PRIME AND SECONDARY INGOT; LOW COPPER CONTENT; CORROSION RESISTANT.
FERROGRIIT (ABRASIVE CAST IRON):
CLASS 20 IRON; HIGH SILICON; MACHINABLE, HYPER-ELECTRIC.
· ANY HOLES OR COUNTERSINKS SHALL BE MACHINE MADE, CORED HOLES OR COUNTERSINKS ARE NOT ACCEPTABLE. SCREWS/HEADS SHALL NOT PROTRUDE ABOVE TREAD SURFACE.
· ALL METAL TYPES SHALL HAVE SHOT-BLASTED FINISH; FERROGRIIT TREADS AND NOSINGS TO HAVE ONE COAT SHOP-BLACK PAINT.
· CROSS HATCHING AND FLUTING SHALL BE 1/16 INCH (1.59 MM) DEEP MINIMUM AND SHALL BE CLEAN AND WELL DEFINED. TREADS AND NOSINGS SHALL BE MANUFACTURED, PACKED AND SHIPPED SO AS TO ARRIVE AT THE JOBSITE IN GOOD CONDITION.
· NOSINGS SHALL TERMINATE NOT MORE THAN 6" (101.6 MM) FROM ENDS OF STEPS FOR POURED CONCRETE STAIRS; FOR CONCRETE FILLED PAN STAIRS, NOSINGS SHALL BE FULL LENGTH OF STEPS LESS 1/8" (3.05 MM) CLEARANCE.
NOTE: SAFETY NOSINGS COMING INTO NEW POURED CONCRETE OR CEMENT FILL SHALL BE INSTALLED BEFORE "INITIAL SET" OF THE CONCRETE OR CEMENT OCCURS.

KEY PLAN



REVISIONS

NO.	DATE	DESCRIPTION
1	4-20-07	BID ISSUE

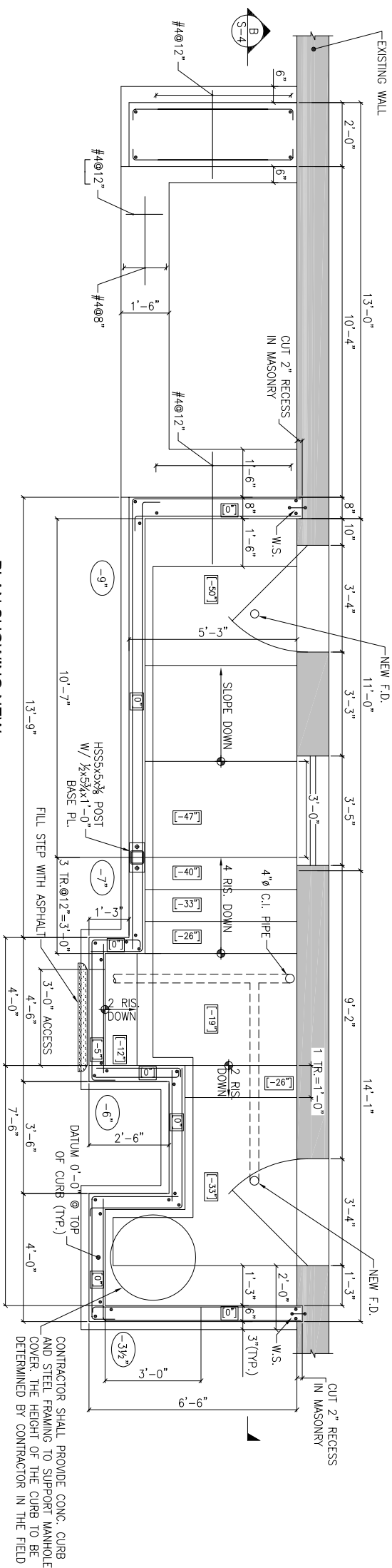
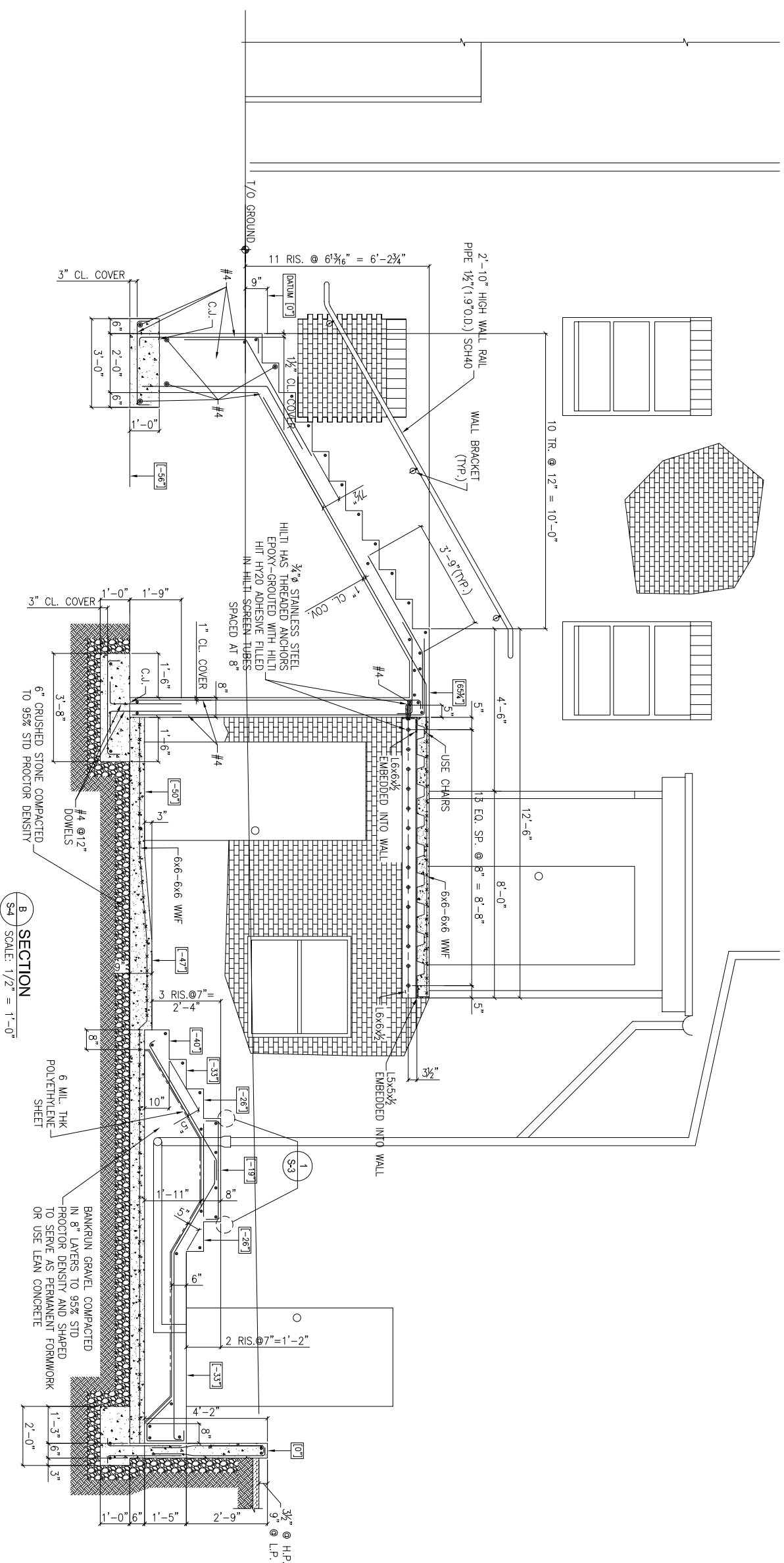
DRAWING TITLE

REPLACEMENT STAIR
PLANS, SECTIONS & DETAILS
SHEET 1 OF 2

DATE: 10/15/07

DRAWING NO.

S-3



PLAN SHOWING NEW
BELOW GRADE STAIR TO BASEMENT

A	BELOW GRADE
S-4	SCALE: 1/2" = 1'-0"

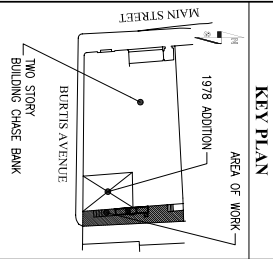
NOTES:

1. WALL FOOTING NOT SHOWN FOR CLARITY

2. [xxx] – INDICATES TOP OF CONC. SLAB

3. (XXX) - INDICATES GRADE ELEVATION BELOW DATUM 0'-0" SHOWN ON THIS PLAN

REVISIONS		
NO.	DATE	DESCRIP

[illegible]

PROJECT:	REPLACEMENT OF REAR ENTRANCE STAIRCASE & HOUSING
DRAWING TITLE	REPLACEMENT STAIR PLANS, SECTIONS & DETAILS SHEET 2 OF 2