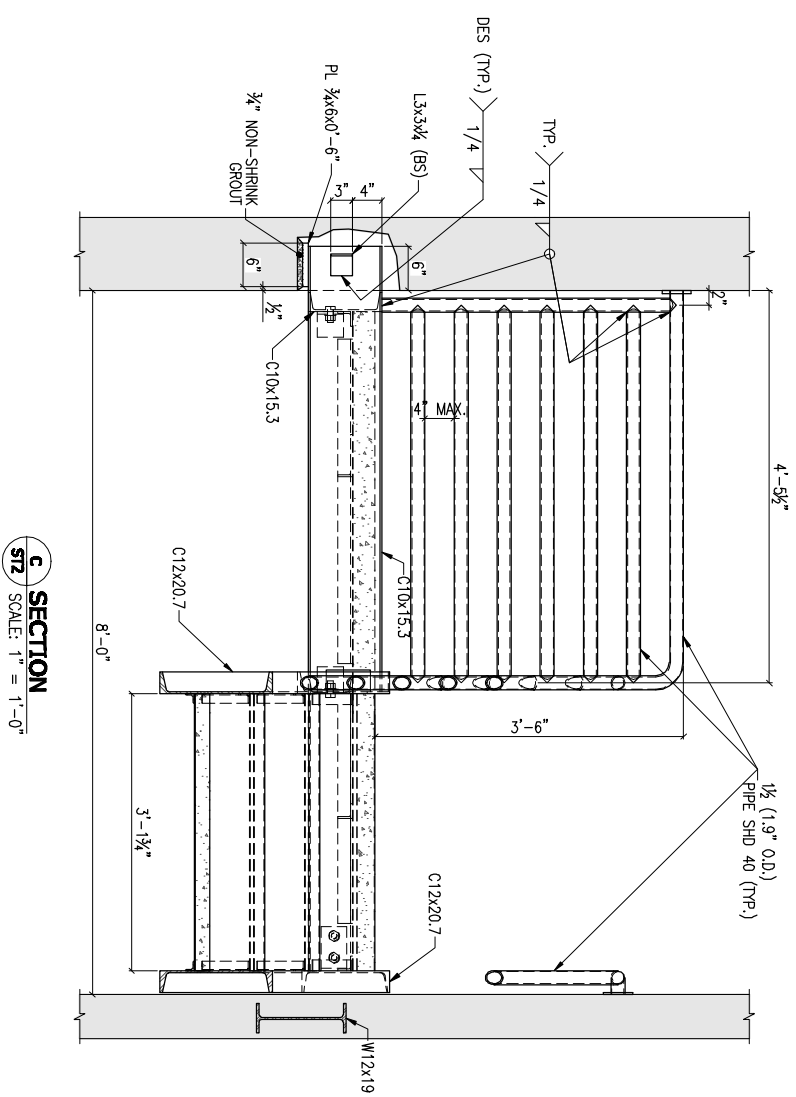
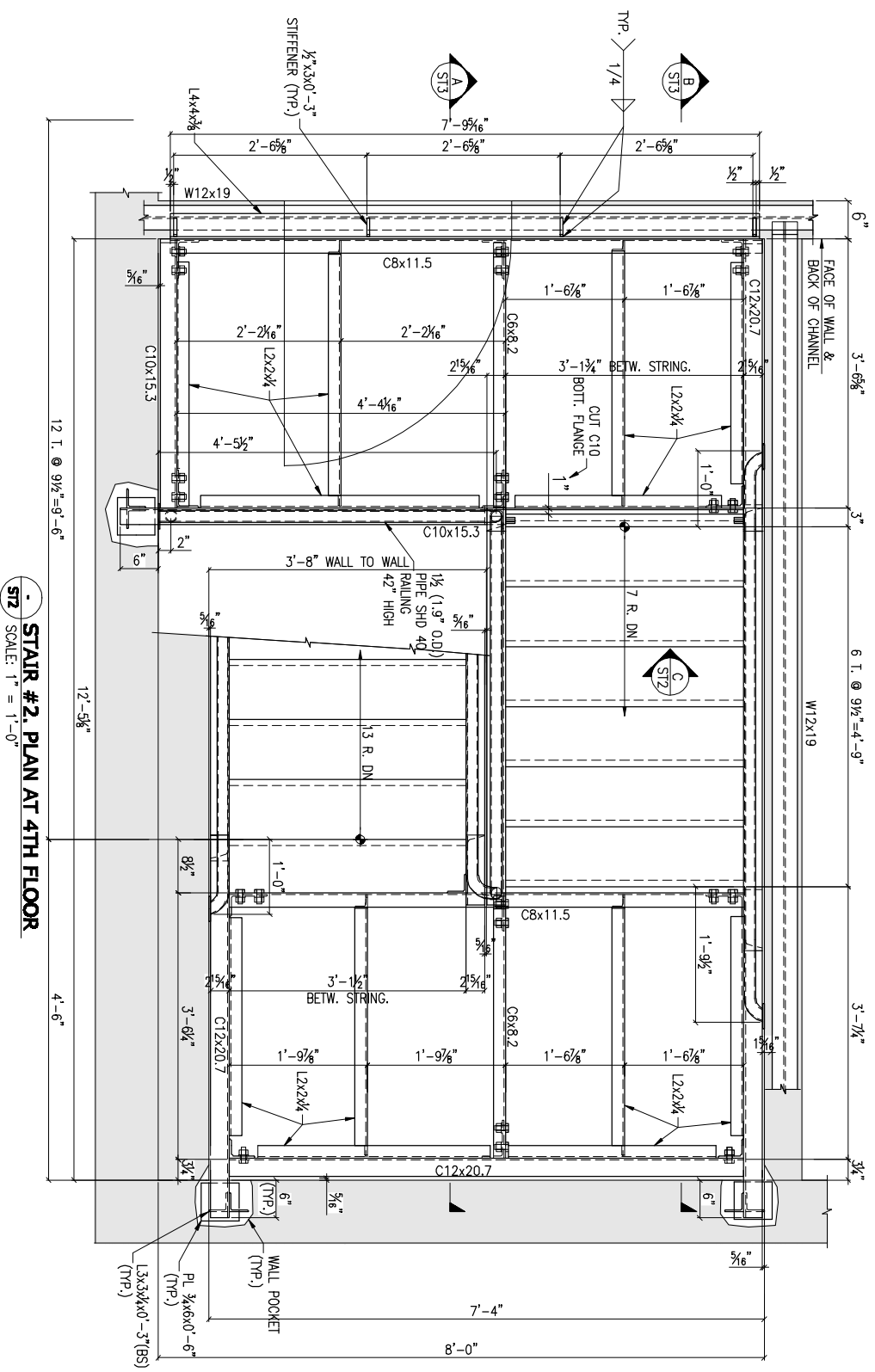


MATERIAL: 8992-56; TUBES: A500 GRB
 CHANNELS: A36; FITTINGS: A36
 BOLTS: 3/4" A325SSC (UNO)
 HOLES: 13/16" (UNO)
 WELD: E70XX ELECTRODES LOW HYDROGEN
 PAINT: AS PER SPECIFICATION

TITLE: STAIR #2 PLANS

No.	DATE	REVISIONS	REMARKS

DRAWN BY: A.B.	DATE: Oct/10/06	JOB No.	DRAWING
CHECKED BY:			ST1



MATERIAL: 8992-56; TUBES: A500 GR.B
 CHANNELS: A36; FITTINGS: A36
 BOLTS: 3/4" A325SSC (UNO)
 HOLES: 13/16" (UNO)
 WELD: E70XX ELECTRODES LOW HYDROGEN
 PAINT: AS PER SPECIFICATION

TITLE: STAIR #2 PLAN AND SECTION

REVISIONS

No. DATE REMARKS

DRAWN BY: A.B. DATE: JOB No. DRAWING

CHECKED BY: 0ct/10/06 ST2

