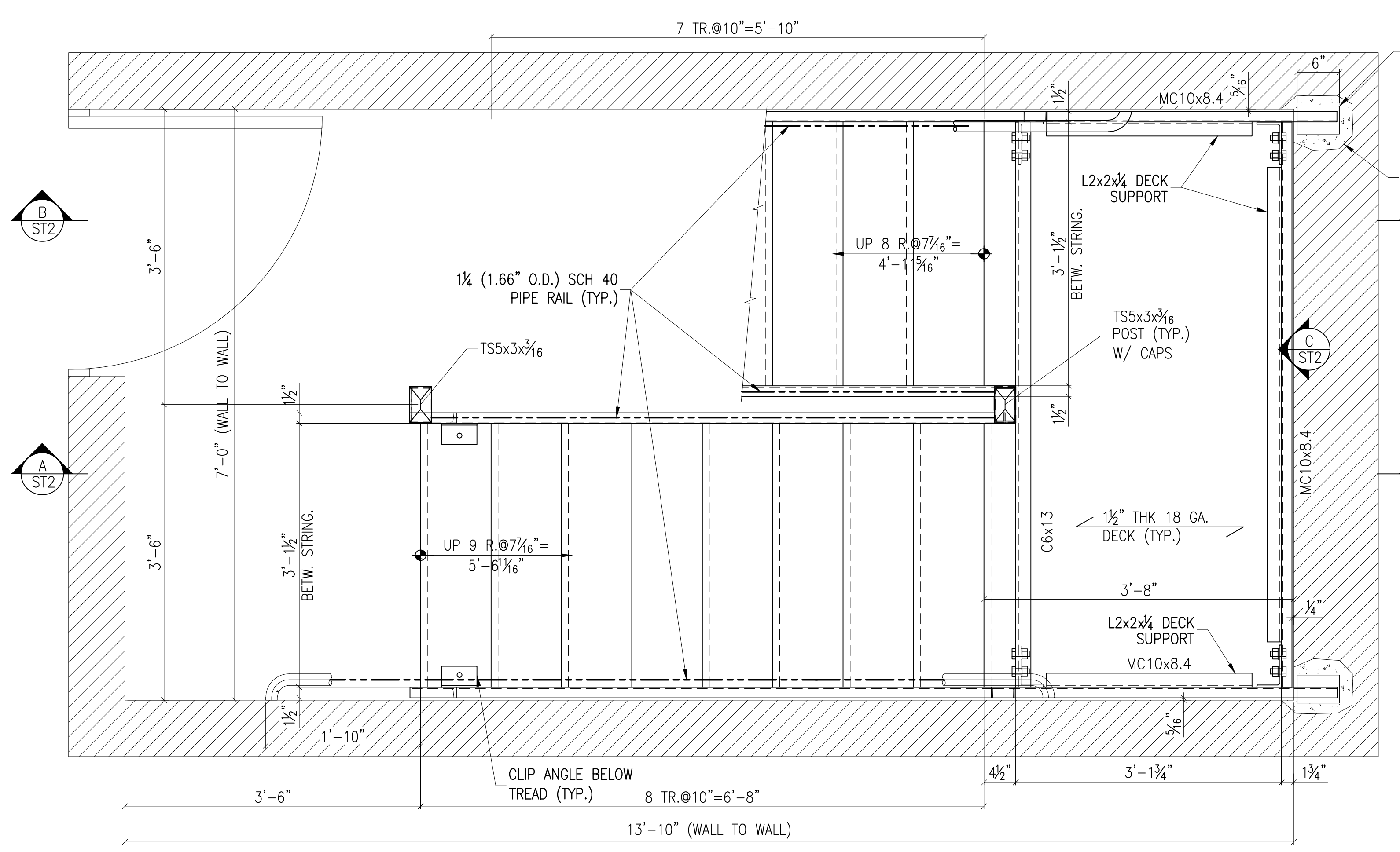
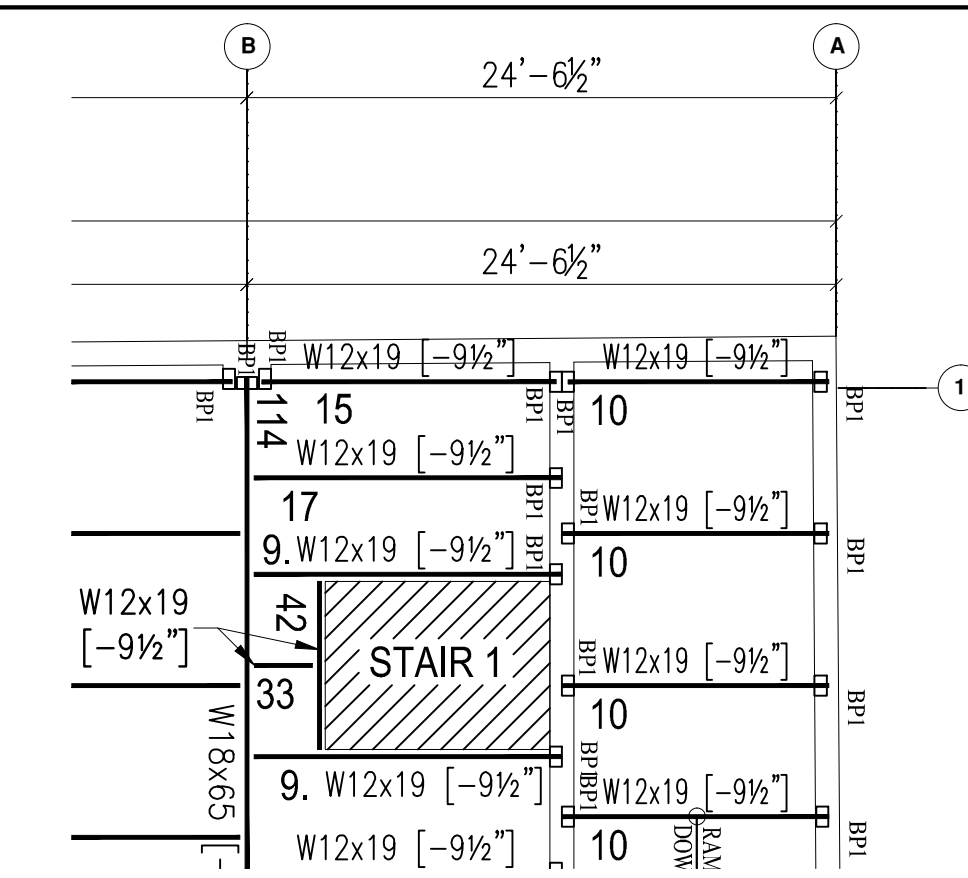


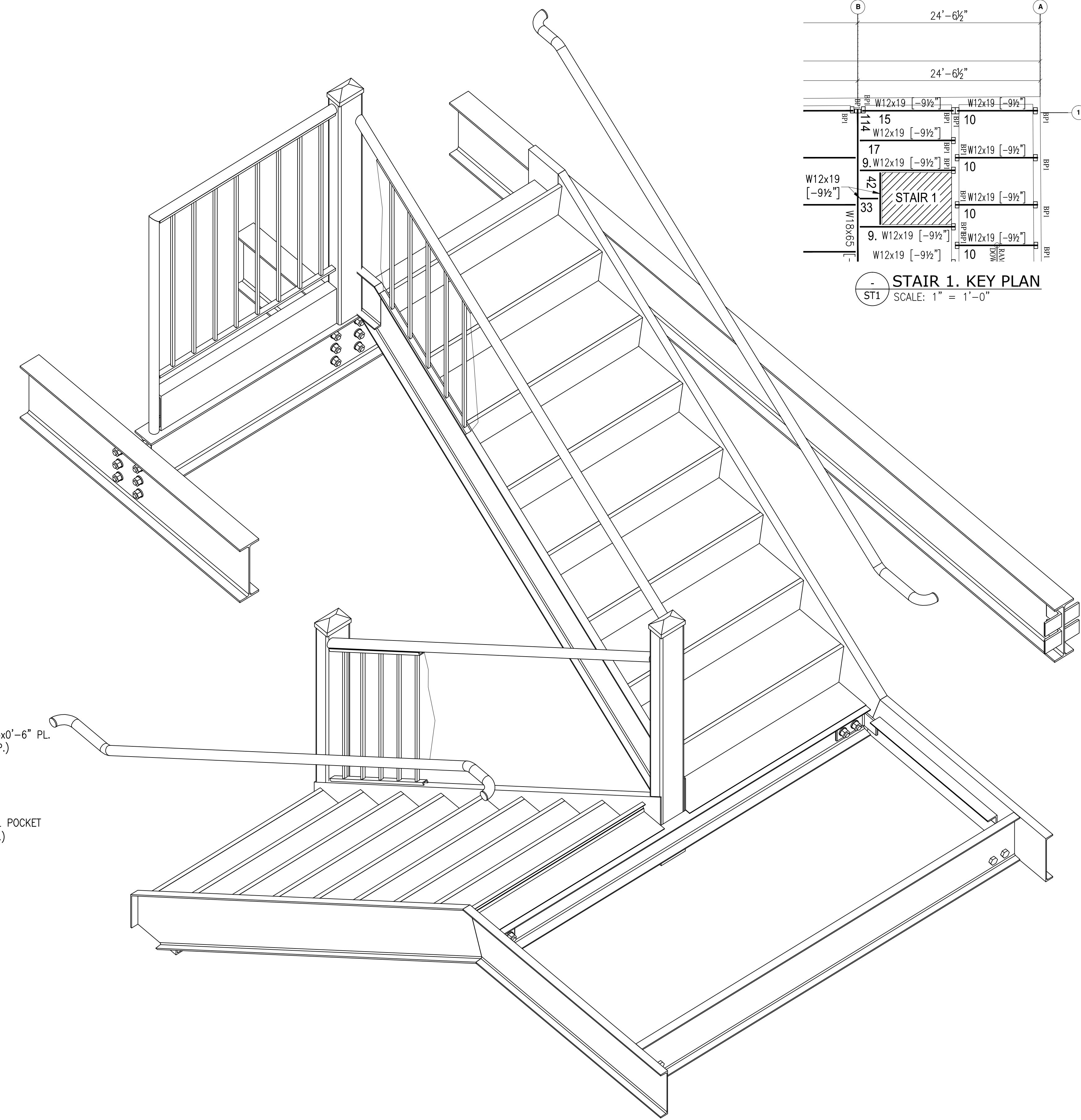
STAIR 1 PLAN AT 1ST FLOOR
ST1 SCALE: 1" = 1'-0"



STAIR 1 PLAN AT CELLAR FLOOR
ST1 SCALE: 1" = 1'-0"



STAIR 1 KEY PLAN
ST1 SCALE: 1" = 1'-0"

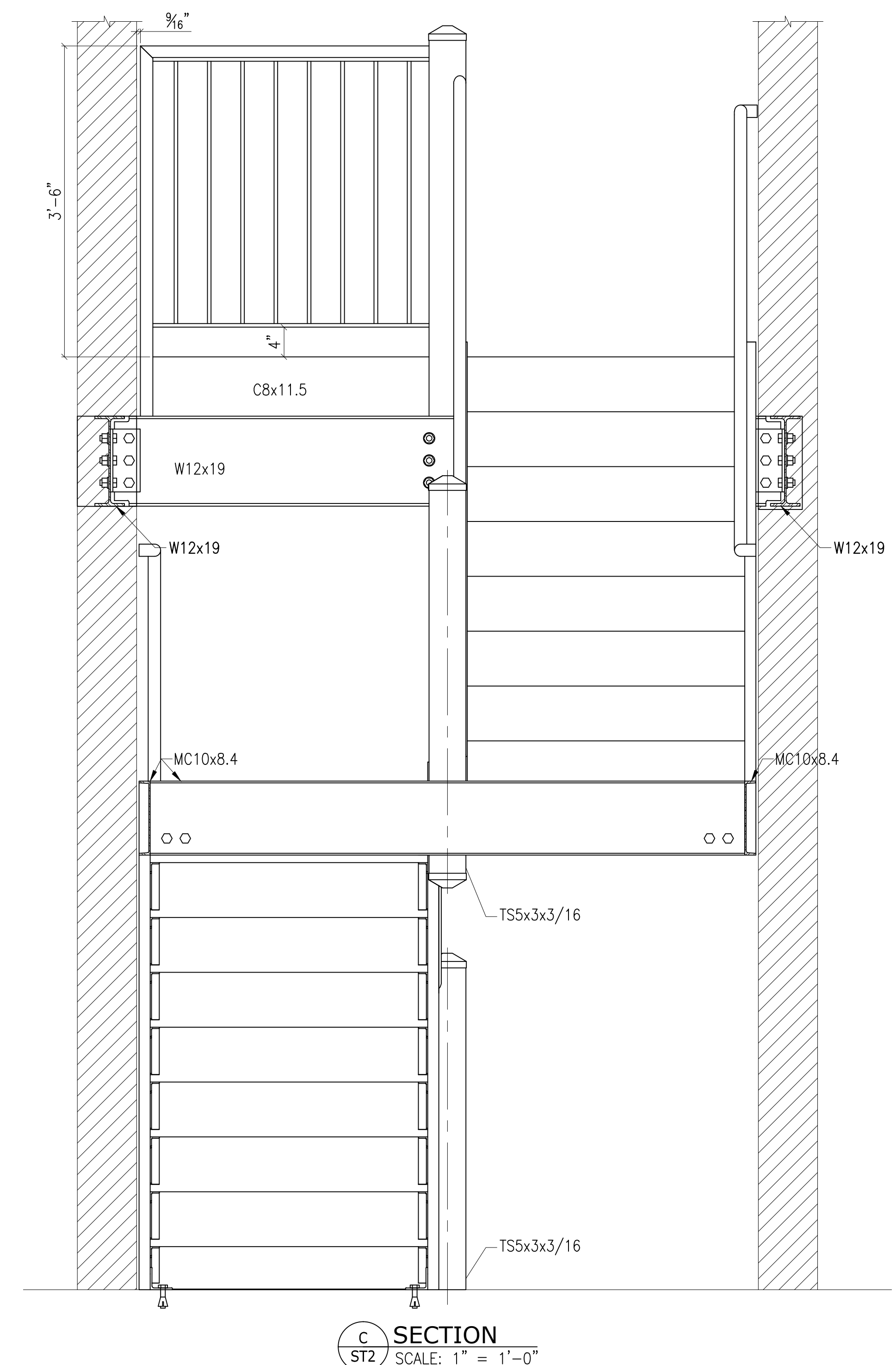
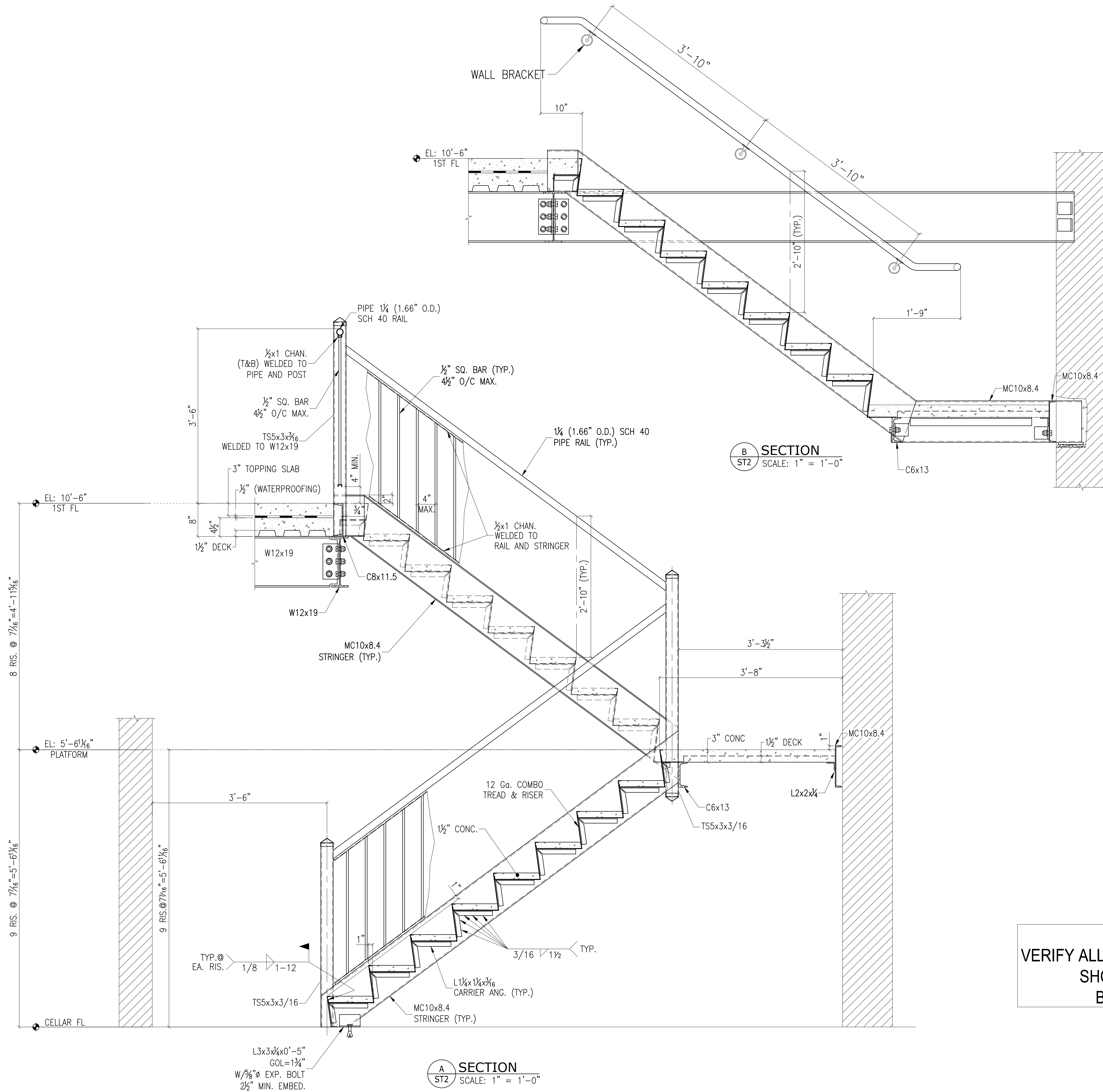


STAIR 1 ISOMETRIC VIEW
ST1 SCALE: 1" = 1'-0"

STEEL FABRICATOR:
VERIFY ALL DIMENSIONS AND ELEVATIONS
SHOWN ON THIS DRAWING
BEFORE FABRICATION

MATERIALS: W SHAPES: A992-50 TUBES: A500 GR. B ANGLES, CHANNELS & PLATES: A36 BOLTS: 3/4" A325SC TC (U.O.N.) HOLES: 13/16" (U.O.N.) PAINT: AS PER SPECIFICATION			WORK THIS DRAWING WITH DWGs A-001-A-005 & E0-E2
PENA CONSTRUCTION CORP.			PROJECT: 111-16 ATLANTIC AVENUE
TITLE: STAIR 1 PLANS AND SECTIONS			LOCATION: 111-16 ATLANTIC AVENUE, RICHMOND HILL, NY
REVISIONS			ENGINEER: RIZWAN ABDUS SALAM, P.E. CONSULTING ENGINEER
No.	DATE	REMARKS	ARCHITECT: GERALD J. CALIENDO, R.A., A.I.A. ARCHITECT, P.C.
			DRAWN BY: A.B. DATE: May/24/10

ST1



**STEEL FABRICATOR:
VERIFY ALL DIMENSIONS AND ELEVATIONS
SHOWN ON THIS DRAWING
BEFORE FABRICATION**

MATERIALS: W SHAPES: A992-50 TUBES: A500 GR. B ANGLES, CHANNELS & PLATES: A36 BOLTS: 3/4" A325SC TC (U.O.N.) HOLES: 13/16" (U.O.N.) PAINT: AS PER SPECIFICATION			WORK THIS DRAWING WITH DWGS A-001-A-005 & E0-E2
PENA CONSTRUCTION CORP.			
PROJECT: 111-16 ATLANTIC AVENUE			
TITLE: STAIR 1 SECTIONS			
LOCATION: 111-16 ATLANTIC AVENUE RICHMOND HILL, NY			
ENGINEER: RIZWAN ABDUS SALAM, P.E. CONSULTING ENGINEER			
ARCHITECT: GERALD J. CALIENDO, R.A., A.I.A. ARCHITECT, P.C.			
DRAWN BY: A.B. DATE: May/24/10			ST2
REVISIONS			
No.	DATE	REMARKS	